

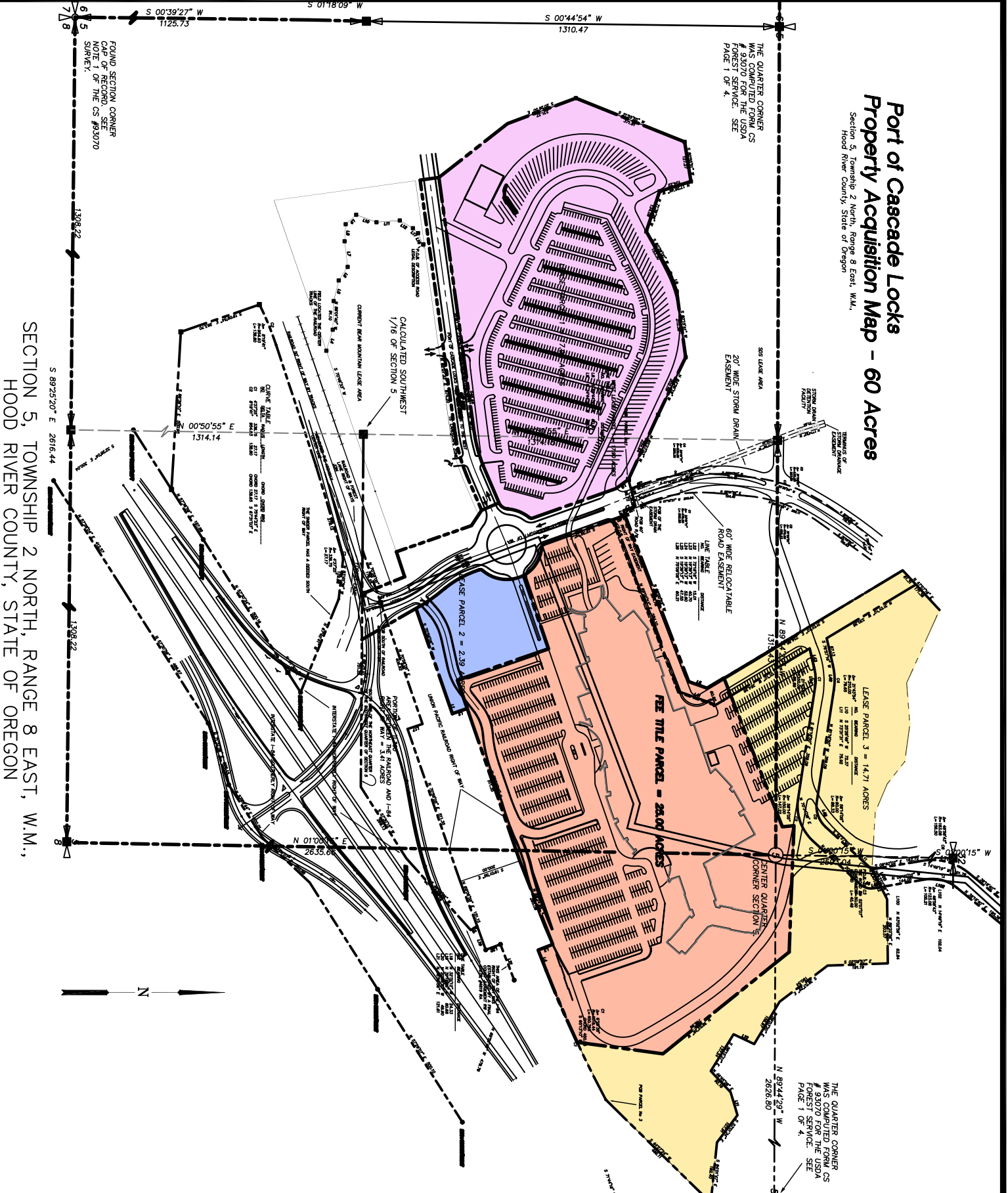
Bussard Engineering, LLC
 15 S.W. Colorado
 Bend, Oregon 97702
 (541) 388-4656 Fax (541) 388-6772

**CASCADE LOCKS
 CONFEDERATED TRIBES OF
 WARM SPRINGS
 PURCHASE/LEASE PARCELS**

SCALE	1" = 400'
DRAWN BY	CAH
CHECKED BY	JEB
DATE	2/7/05

PAGE 1 OF 1
 EX. AA

**Part of Cascade Locks
 Property Acquisition Map - 60 Acres**
 Section 5, Township 2 North, Range 8 East, W.M.,
 Hood River County, State of Oregon



THE QUARTER CORNER
 WAS COMPUTED FROM CS
 # 93070 FOR THE USDA
 FOREST SERVICE. SEE
 PAGE 1 OF 4.

THE QUARTER CORNER
 WAS COMPUTED FROM CS
 # 93070 FOR THE USDA
 FOREST SERVICE. SEE
 PAGE 1 OF 4.

FOUND SECTION CORNER
 CAP OF RECORD. SEE
 NOTE 1 OF THE CS #93070
 SURVEY.

SECTION 5, TOWNSHIP 2 NORTH, RANGE 8 EAST, W.M.,
 HOOD RIVER COUNTY, STATE OF OREGON

615
 78

8

W 1310.47
 S 1125.73

W 1310.47
 S 1310.47

1308.22

1308.22

2635.68

2626.80

2616.44

2616.44

2616.44

2616.44